

# Original OfficeWriter Designer

## Jump to:

- [Automatic Installation](#)
- [Manual Installation](#)
- [Change an OfficeWriter Designer registry key](#)

## Automatic Installation

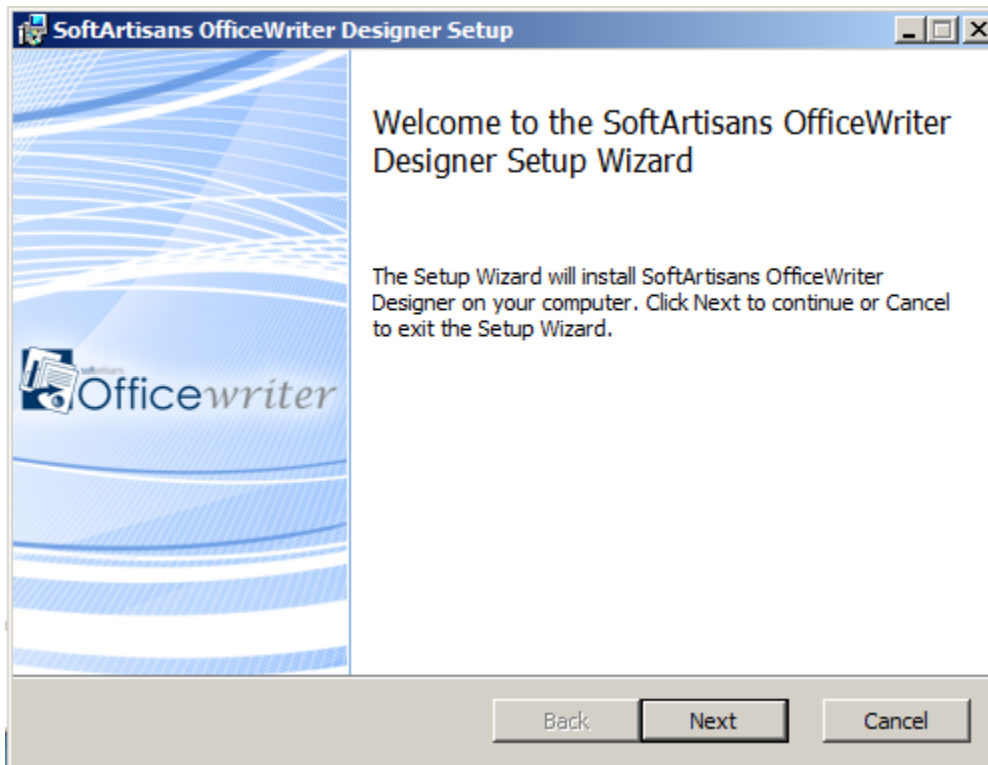
### Where to get the installer

There are several places to get the **OfficeWriterDesigner-Installer-8.#.#.msi**:

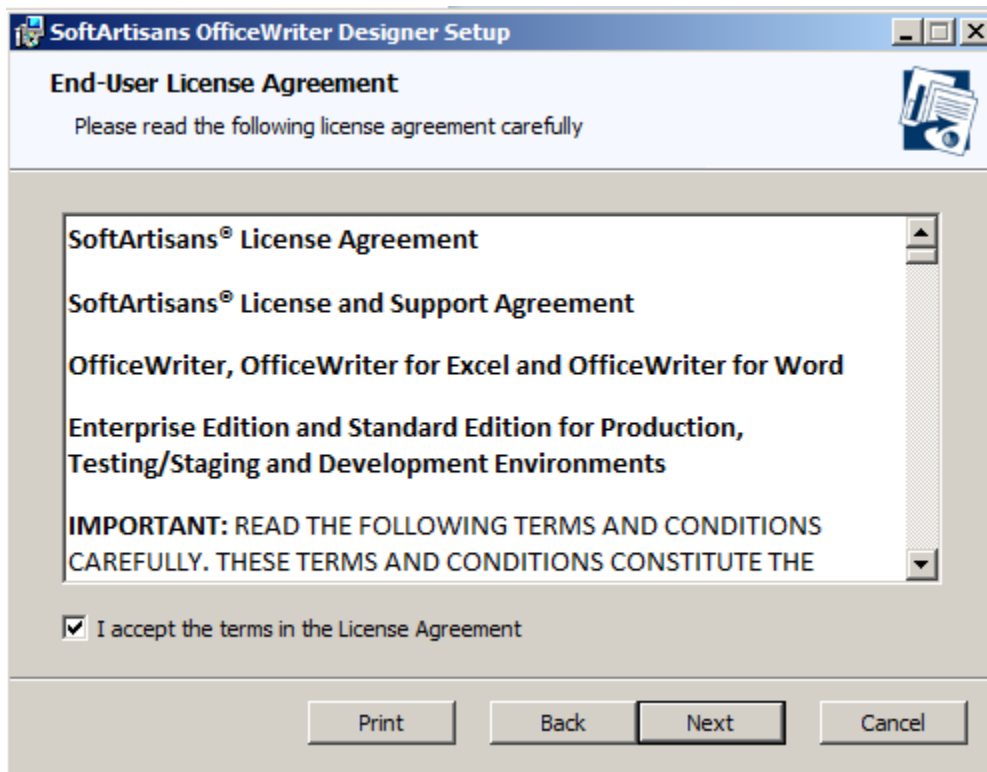
- **Program Files:** The OfficeWriter Designer installer is included in the installation file for server-side component of OfficeWriter. It should be located under `C:\Program Files\SoftArtisans\OfficeWriter`.
- **OfficeWriter.com:** The latest version of the OfficeWriter Designer installer is also available separately for download on the [Officewriter website](#).
- **Evaluation E-mail:** If evaluating, a link to download the OfficeWriter Designer separately is provided in the e-mail sent when evaluation started.

### Running the installer

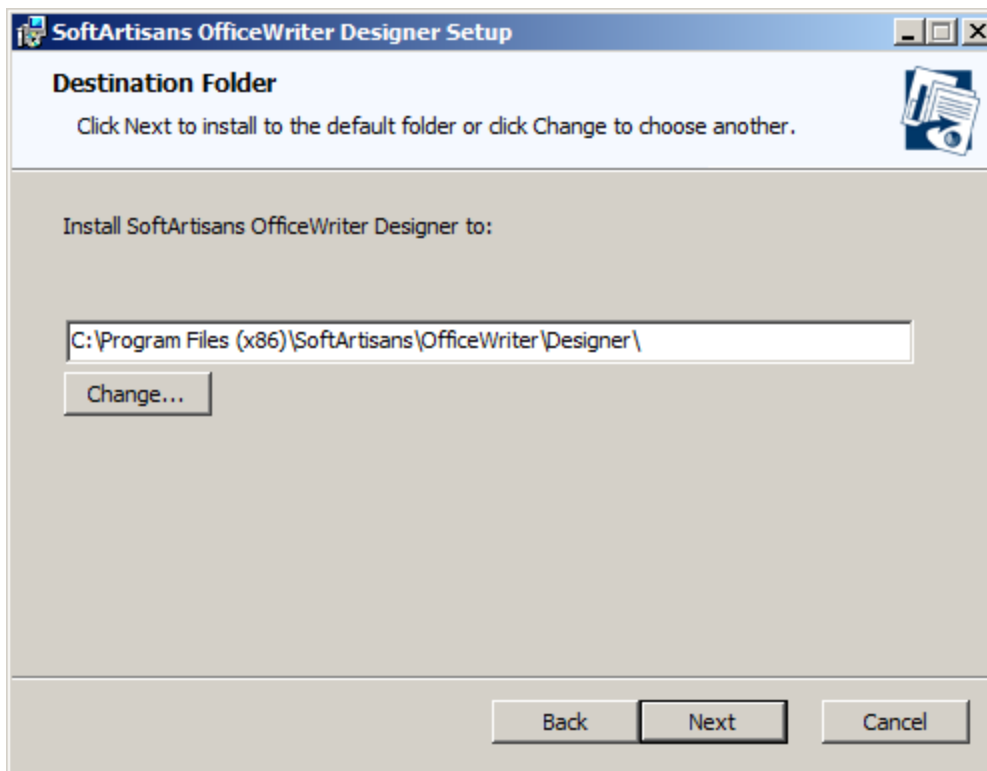
1. Copy the OfficeWriter Designer install files to the client machine.
2. Check that your system meets [System Requirements](#) for the OfficeWriter Designer. This includes a 32-bit version of Office 2007 or later with appropriate service packs and security patches, MS Query, and VBA.
3. Close all Microsoft Office applications.
4. If there are previous versions of the Designer installed, make sure to uninstall the OfficeWriter Designer through Add/Remove programs or Programs and Features.
5. Double-click **OfficeWriterDesigner-Installer.msi** to begin the OfficeWriter Designer installation.



6. Read the End-User license agreement.



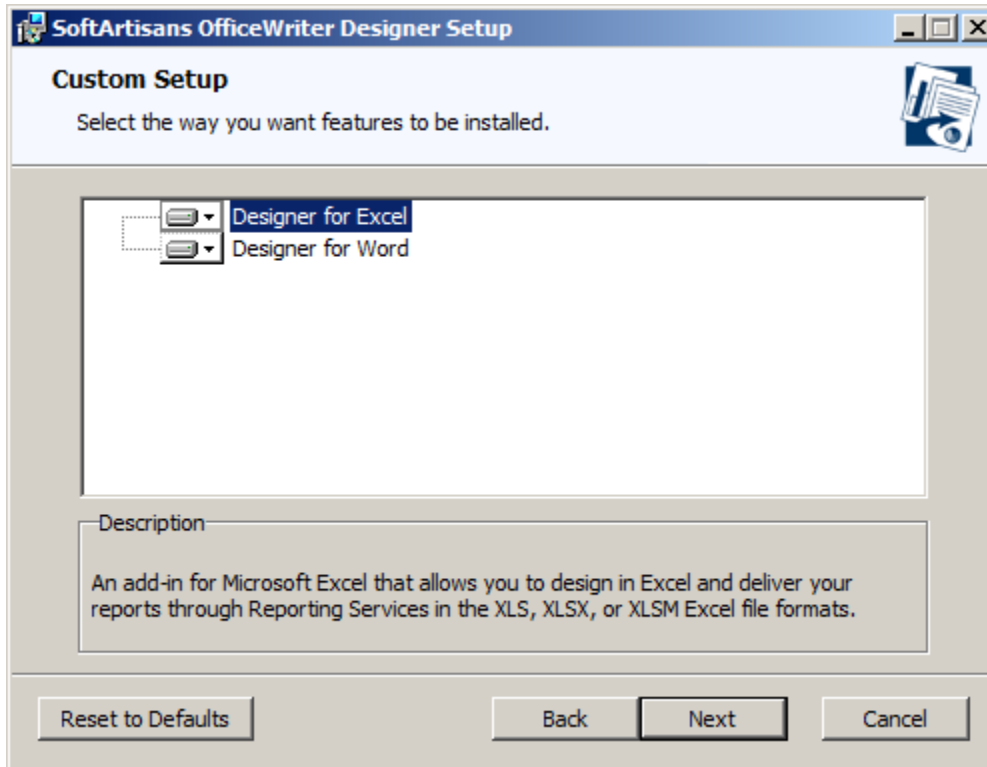
7. Select the **Destination Folder**. This installer will unpack some samples of pre-designed reports and the Designer installation source files.



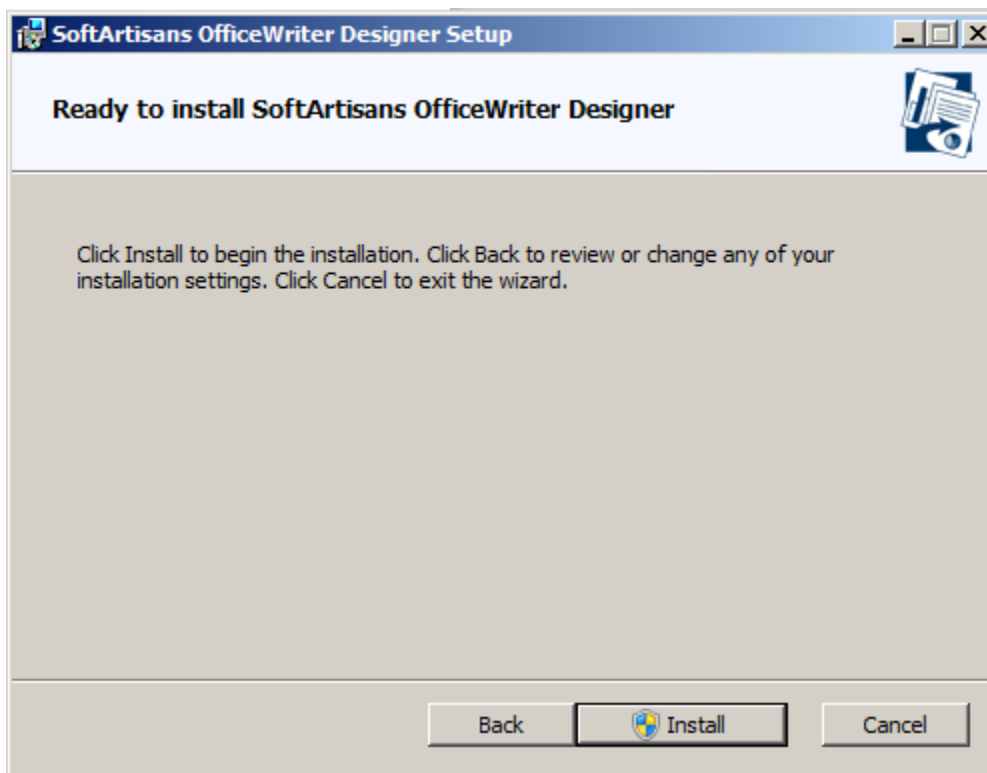
The OfficeWriter Designer can be run on 64-bit or 32-bit systems, but will unpack the samples and install files under the 32-bit version of Program Files: C:\Program Files x86\SoftArtisans\OfficeWriter\Designer on 64-bit systems or C:\Program Files\SoftArtisans\OfficeWriter\Designer for 32-bit systems.

8. Select whether to install the OfficeWriter Designer Add-In for Excel, Word or both. If the installer detects that either Excel or Word is not

installed on the machine, you will not have the option to install the Add-In for the missing application.



9. The OfficeWriter Designer installer requires administrative privileges to register a few components used by the Add-In. You will be prompted for administrative credentials before the installation can complete.



## Manual Installation

1. Run the automatic installation on one machine in order to unpack the OfficeWriter Designer files. After these files have been unpacked, you can install the OfficeWriter Designer manually on other machines
2. Close all Microsoft Office applications.
3. Open a command prompt window and move to the directory OfficeWriter\Designer. For example, enter **cd C:\Program Files\SoftArtisans\OfficeWriter\Designer**.
4. Enter **regsvr32 SARS8CLT.dll**. A dialog box will inform you that SARS8CLT.dll registered successfully; click **Ok**.
5. Enter **regsvr32 OWAssist.dll**. A dialog box will inform you that OWAssist.dll registered successfully; click **Ok**.
6. Enter **regsvr32 XFClient.dll**. A dialog box will inform you that XFClient.dll registered successfully; click **Ok**.



The Application Data folder is hidden by default. In order to show hidden folders, open a Windows Explorer window and go to **Tools**. Select **Folder Options**, then select the **View** tab. Under **Hidden files and folders**, check the radio button beside **Show hidden files and folders**.

7. Copy **OWDesigner\_Ribbon.dotm** from **OfficeWriter\Designer** to **%appdata%\Microsoft\Word\STARTUP**.
8. Copy **OWDesigner\_Ribbon.xlam** from **OfficeWriter\Designer** to **%appdata%\Microsoft\Excel\XLSTART**.
9. Create the Registry Key settings as described below.

## To change an OfficeWriter Designer registry key value:

- Open the Start menu and select **Run**.
- Enter **regedit** and click **Ok**.
- Open the folder **HKEY\_CURRENT\_USER\Software\SoftArtisans\OfficeWriter\Designer**.
- Double-click the key you want to update. A dialog will open.
- In the **Value Data** field, enter a new value for the key.

### OfficeWriter Designer Registry Keys

Key	Type	Value Description
Toolbar Caption Style	REG_DWORD	<b>1</b> - Icon only <b>2</b> - Caption only <b>3</b> - Icon and caption (default)
Enable MSQuery	REG_DWORD	<b>0</b> - Disable 'Add Query', 'Edit Query' and 'Delete Query' buttons. (default) <b>1</b> - Enable 'Add Query', 'Edit Query' and 'Delete Query' buttons.
Always Ask Param Values	REG_DWORD	<b>0</b> - Don't ask for parameter values in reports with parameters if valid default values are specified in the RDL file. <b>1</b> - Always ask for parameter values in reports with parameters, even if valid default values are specified in the RDL file. (default)
Excel AddIn Default Renderer	REG_SZ	Rendering extension used for viewing report without template in Excel Add-In. "EXCEL" is default.
Word AddIn Default Renderer	REG_SZ	Rendering extension used for viewing report without template in Word Add-In. "HTML4.0" is default.
Debug	REG_SZ	<b>"True"</b> - Enables SOAP request and response dump to c:\temp\PayloadDump.xml and c:\temp\ResponseDump.xml correspondingly. <b>"False"</b> - Disables SOAP request and response dump. (default)
No Overwrite Prompt	REG_DWORD	<b>1</b> - Don't prompt to overwrite RDL file in Save As dialog. <b>0</b> - Prompt to overwrite RDL file in Save As dialog. (default)

Validate Fields	REG_DWORD	<b>1</b> - Validate that each template data field has a field in the data source that binds to it. Generates error on "Save" on the client instead of error on "View" on the server. <b>0</b> - Don't validate that each template data field has a field in the data source that binds to it. (default)
Hide Enterprise Features	REG_DWORD	<b>1</b> - Hides Insert Formula drop-down. <b>0</b> - Shows Insert Formula drop-down (default)
No Enterprise Features Warning	REG_DWORD	<b>1</b> - Disables Enterprise Feature warning. <b>0</b> - Enables Enterprise Feature warning. (default)
Help File Path	REG_SZ	Path to chm file. Default value is <b>C:\WINDOWS\Help\OfficeWriterRS.chm</b>
SamplesDir	REG_SZ	Path to the root or samples (RDL) directory. Default value is <b>C:\Program Files\SoftArtisans\OfficeWriter\Designer\samples</b>
InstallDir	REG_SZ	Path to install directory. <b>C:\Program Files\SoftArtisans\OfficeWriter\Designer</b>
WordUseOpenFileMRU	REG_DWORD	<b>0</b> - Use SampleDir once, then switch to 1 <b>1</b> - Use last opened dir (default) <b>2</b> - Always use SampleDir
ExcelUseOpenFileMRU	REG_DWORD	<b>0</b> - Use SampleDir once, then switch to 1 <b>1</b> - Use last opened dir (default) <b>2</b> - Always use SampleDir
ServerMRU	Subkey	Keeps a list of most recently used (MRU) servers.

#### How to change an OfficeWriter ServerMRU (most recently used servers) registry key value:

1. Open the Start menu and select **Run**.
2. Enter regedit and click **Ok**.
3. Open the folder **HKEY\_CURRENT\_USER\Software\SoftArtisans\OfficeWriter\Designer\ServerMRU**.
4. Double click the key you want to update. An dialog will open.
5. In the **Value Data** field, enter a new value for the key.

Key	Type	Value	Value Description
Maximum Entries	REG_DWORD	optional, default - 10	Maximum entries in MRU list. Entries at the bottom of the list are removed to accommodate new server URLs.
MRU#	REG_SZ	Server URL (full)	http://<servername>/ReportServer