


# Installing for .NET

## Jump to:

- [Automatic Installation](#)
- [Manual Installation](#)

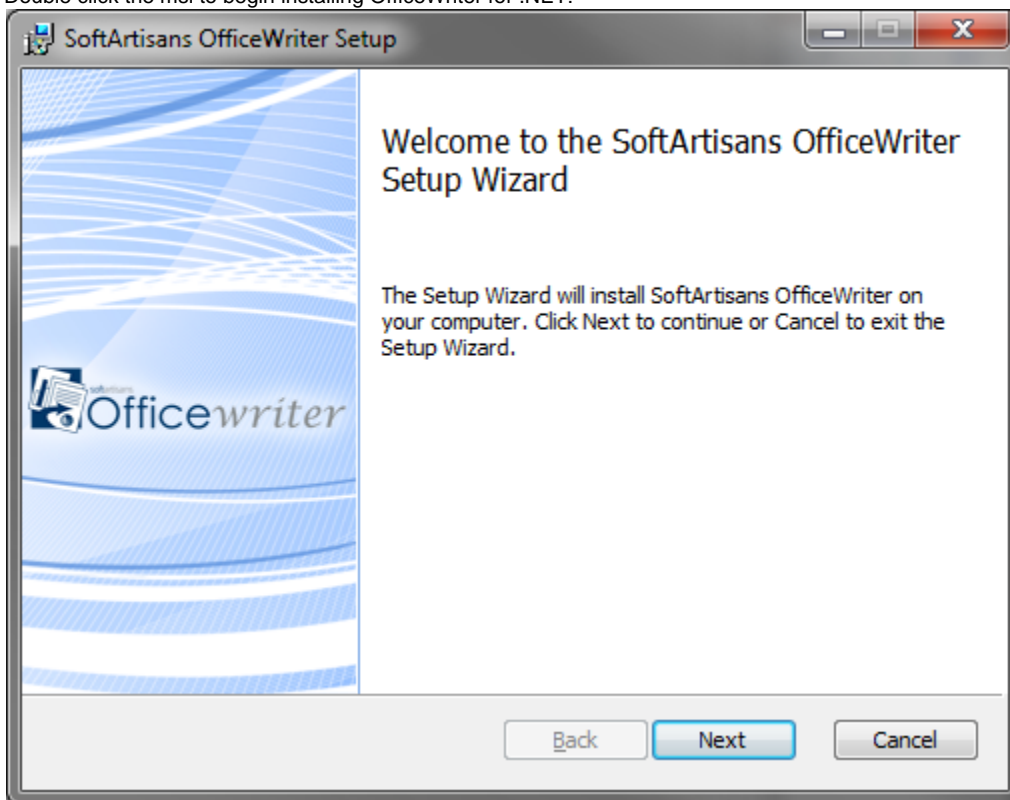
## Automatic Installation

The OfficeWriter 9 installer is available in 64-bit (**OfficeWriter-Installer-9.#.#-x64.msi**) and 32-bit (**OfficeWriter-Installer-9.#.#-x86.msi**).

 There is a single OfficeWriter installer that handles installing any configuration of OfficeWriter, regardless of which edition (SE or EE) or components (ExcelWriter, PowerPointWriter, WordWriter, SSRS integration) you have purchased. To run the installer for the OfficeWriter SSRS integration, follow the **Installing for SSRS** instructions (see tab at top).

### 1. Welcome Screen

Double click the msi to begin installing OfficeWriter for .NET:

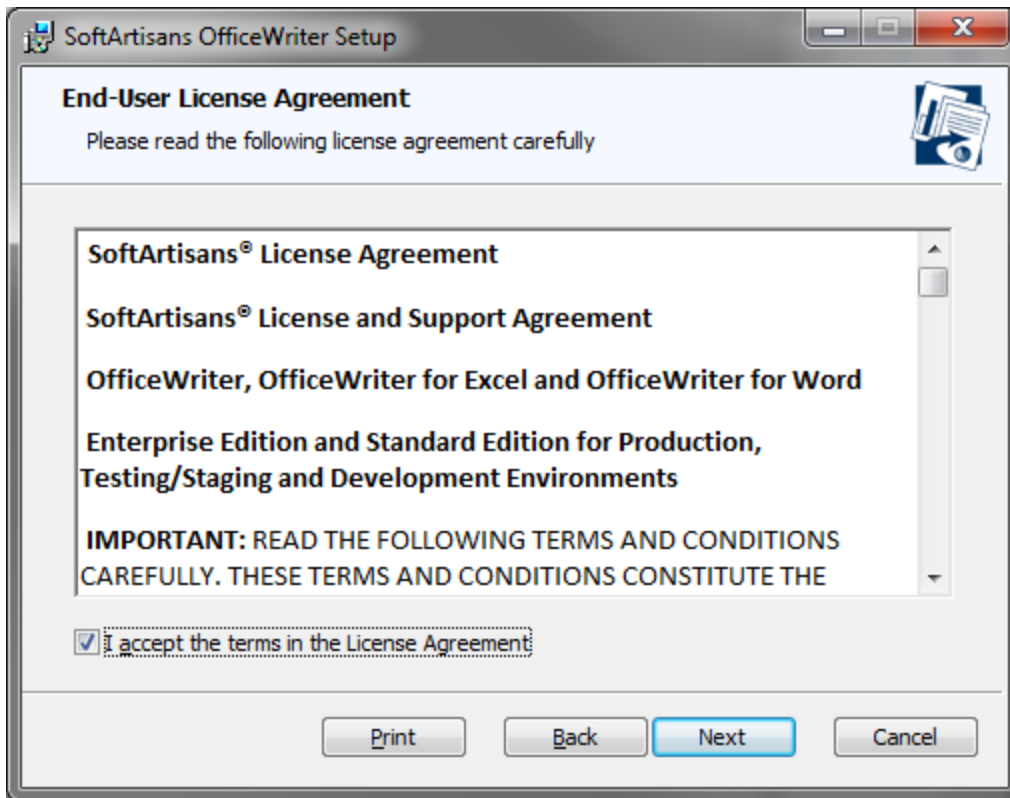


**Note:** If you have a previous version of OfficeWriter installed, you may be prompted to upgrade or remove the existing version of OfficeWriter. We recommend that you follow the steps to remove the previous version of OfficeWriter before continuing with your installation.

Click **Next**.

### 2. End-User License Agreement


Read the End-User License Agreement and click **Next** when finished.



Click **Next**.

### 3. OfficeWriter License Key

You will be prompted for a license key.

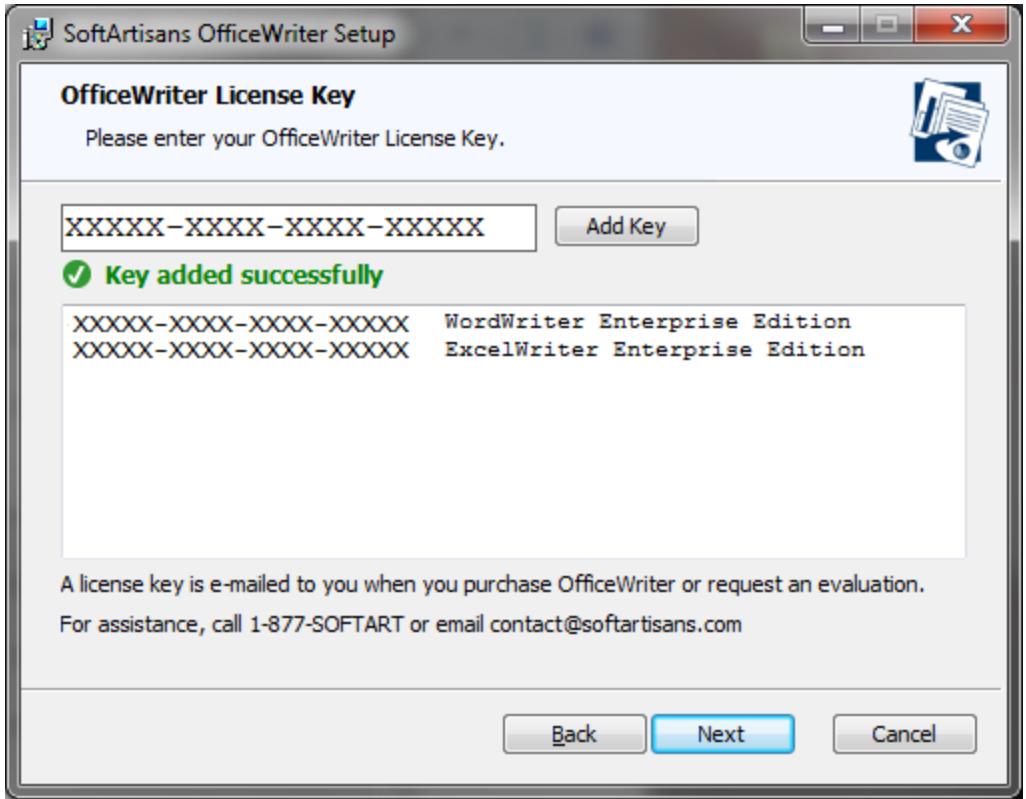
 **Where to find your license key**  
If you are evaluating, your 30-day OfficeWriter EE license key was sent in your evaluation e-mail.

If you have purchased the product, you can find your license keys:

- In the original order confirmation e-mail
- On the [OfficeWriter site](#) - You will need to log in with the credentials that were used to purchase the product. These credentials are also available in the original order confirmation e-mail.

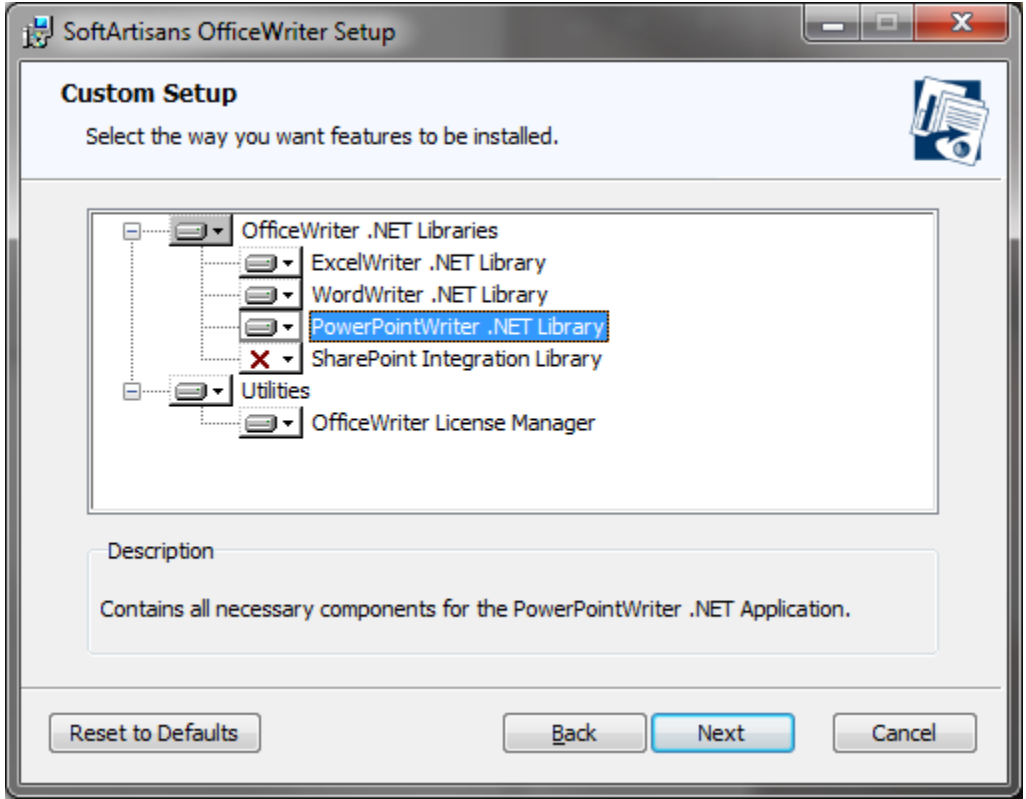
Enter a license key into the box and click **Check Key**.

The installer will confirm what edition (Standard or Enterprise) the license key is. Once the license key is verified, the **Next** button will be enabled. You can add multiple license keys at this step.

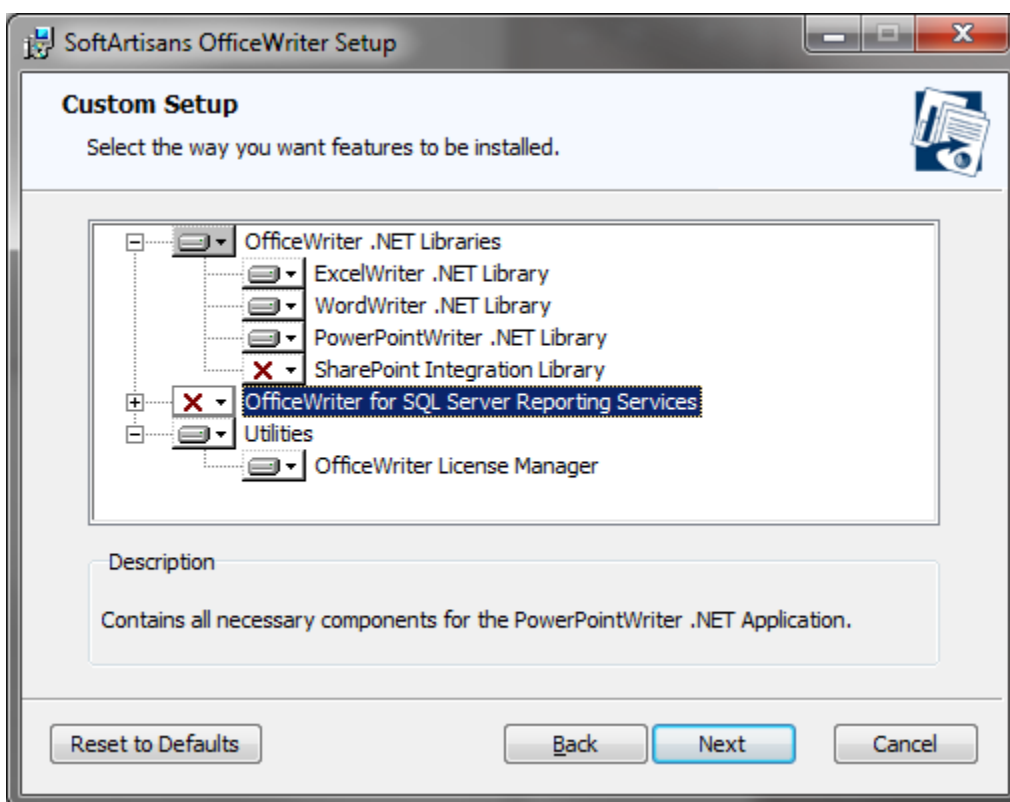


**4. Custom Setup**

You will need to select the components to install. To include or exclude any components from your installation, click on the drop-down next to the component.



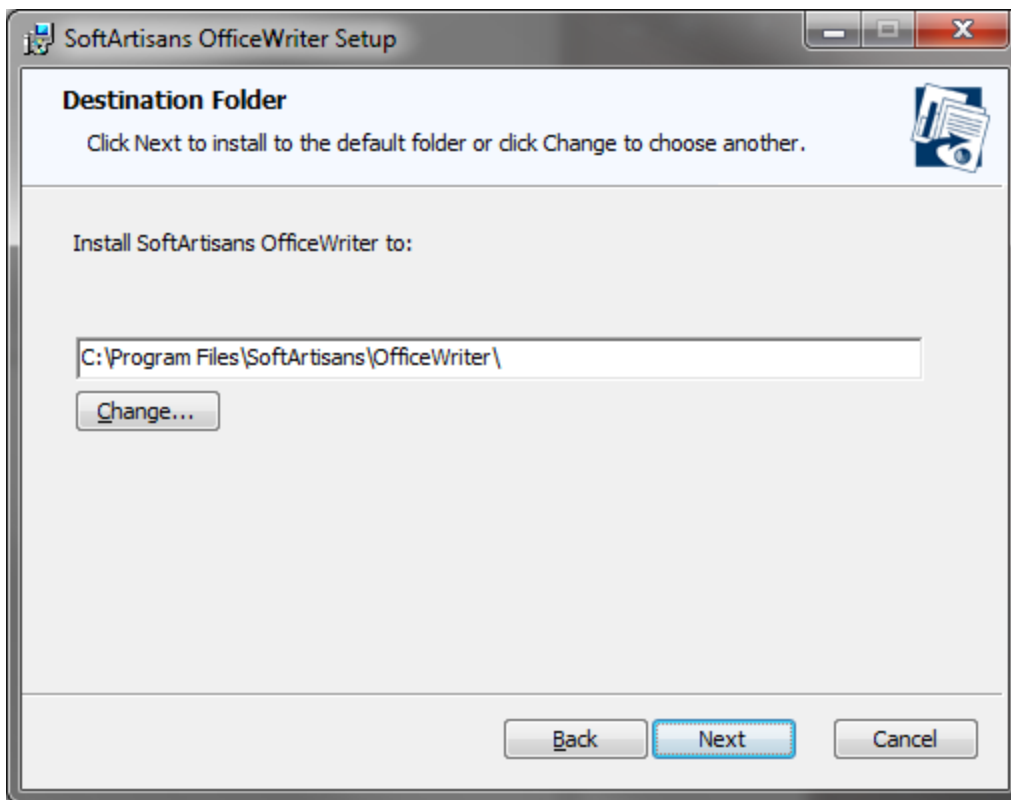
The components that are available for installation are based on the license key that was provided earlier. If you run the installer on a machine that has SQL Server Reporting Services installed, the installer will make the SSRS integration available.



If you are installing OfficeWriter for SSRS, follow the **Installing for SSRS** instructions. For the purpose of installing OfficeWriter for .NET, click the arrow next to OfficeWriter for SQL Server Reporting Services and exclude it from the installation.

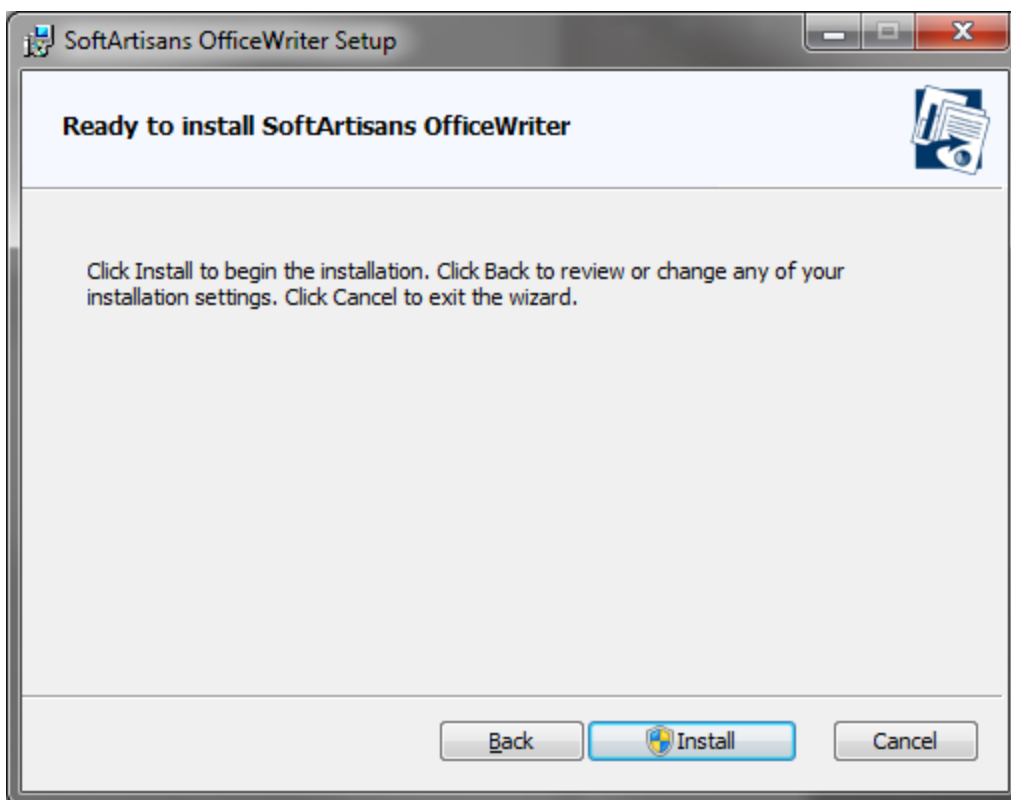
## 5. Destination Folder

The destination folder is where the OfficeWriter assemblies and utilities will be unpacked. By default, the destination folder will be **C:\Program Files\SoftArtisans\OfficeWriter**.



## 6. Ready to install

The OfficeWriter installer requires administrative privileges to write the license key to the registry. On Windows Vista and above, depending on your UAC settings, you may be prompted for UAC elevation during the installation process.

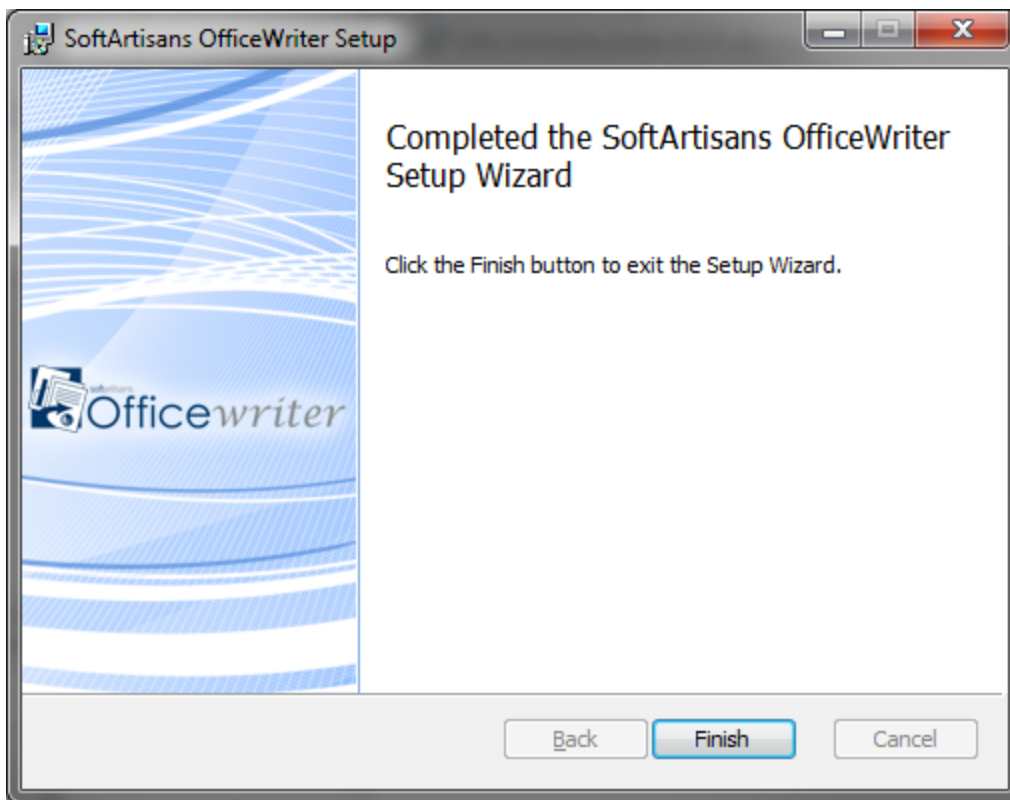



Click **Install** to start the installation. This will register the license key provided earlier and unpack the following files:

### Installation Files

Product	File	Description
<b>ExcelWriter</b>	Softartisans.OfficeWriter.ExcelWriter.dll	<ul style="list-style-type: none"> <li>.NET ExcelTemplate object</li> <li>.NET ExcelApplication object (EE only)</li> </ul>
<b>PowerPointWriter</b>	SoftArtisans.OfficeWriter.PowerPointWriter.dll	<ul style="list-style-type: none"> <li>.NET PowerPointTemplate object (EE only)</li> <li>.NET PowerPointApplication object (EE only)</li> </ul>
<b>WordWriter</b>	Softartisans.OfficeWriter.WordWriter.dll	<ul style="list-style-type: none"> <li>.NET WordTemplate object</li> <li>.NET WordApplication object (EE only)</li> </ul>
<b>License Manager</b>	LicenseManager.exe	Manage, add, and remove license keys for OfficeWriter.
<b>SharePoint Integration</b>	SoftArtisans.OfficeWriter.ExcelWriter.SharePointIntegration.dll	SharePoint Specific Functions (EE only)

### 7. Setup Complete




 Now that OfficeWriter is installed on your machine, you will need to [Add OfficeWriter to your .NET Applications](#).

## Manual Installation

1. Follow the instructions above to perform the automatic installation on a separate machine. This will unpack the assemblies and utilities needed to perform a manual installation.
2. Copy **LicenseManager.exe** and **SoftArtisans.OfficeWriter.ExcelWriter.dll**, **SoftArtisans.OfficeWriter.PowerPointWriter.dll**, or **SoftArtisans.OfficeWriter.WordWriter.dll** to the new machine.
3. Open **LicenseManager.exe** to add the new license keys to the registry.

Writing to the registry requires administrative privileges. If you are using a newer operating system (Windows Vista, Windows 7, or Windows Server 2008), you will need to right click **LicenseManager.exe** and select **Run as Administrator**.

 Now that OfficeWriter is installed on your machine, you will need to [Add OfficeWriter to your .NET Applications](#).