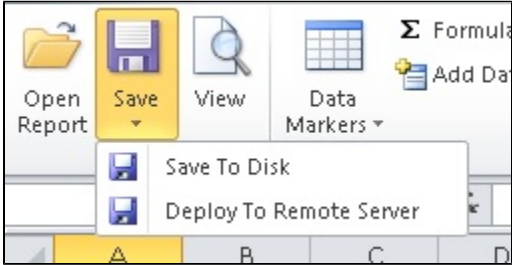


Saving and Deploying Your Excel Report

The OfficeWriter Designer **Save** option allows the user to either save a local copy to disk, or deploy to a remote server:



Save to Disk will save a copy of the report definition file locally. **Deploy to Remote Server** will copy and deploy the file to the Reporting Services server where it will be available for rendering.

Saving your report to disk

1. From the OfficeWriter Designer toolbar select **Save > Save to Disk**.
2. Navigate to a local folder where you will store the template report file. This will be where you store your work file in case you want to edit it later, **not** a location on the Reporting Services server.
3. Save the template as an RDL file.



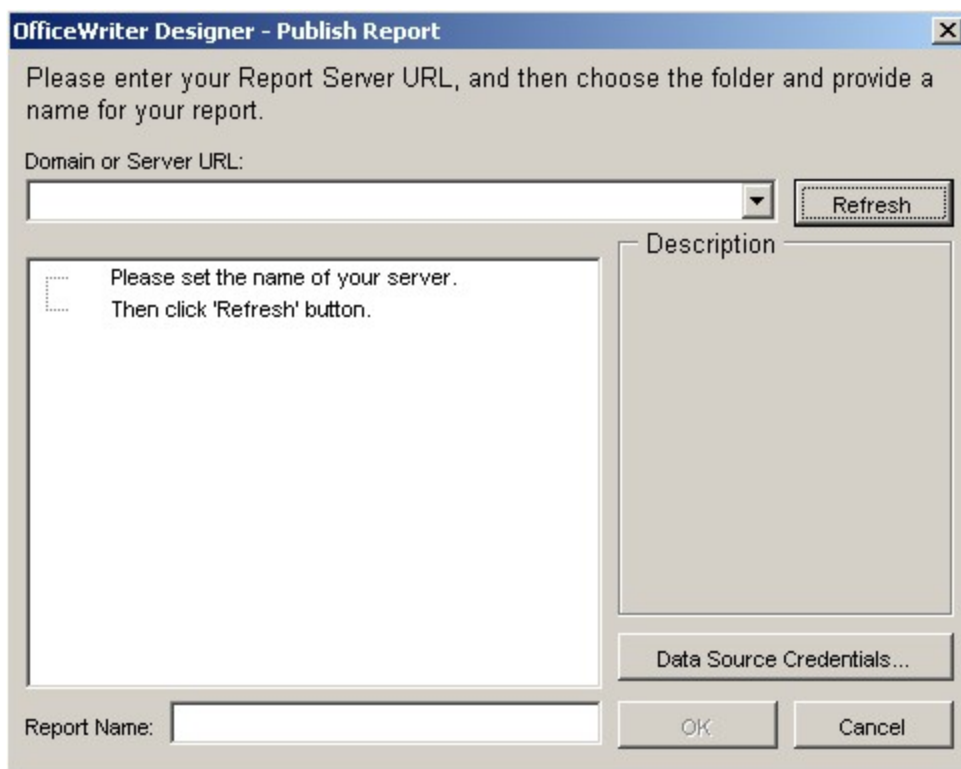
If you want to render the report in a specific format (XLS, XLSX, XLSM), you will need to use the **Save to Disk** option to set the file format for the Excel report in the RDL. However, you will only need to do this once to set the file format, unless you decide to change the file format later.

The file format options for **Save to Disk** are:

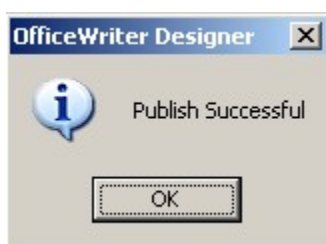
- Office 2003 exports to XLS
- Office 2007 exports to XLSX
- Office 2007 with macros exports to XLSM

Deploying your report to a report server

1. From the OfficeWriter Designer, select **Save > Deploy to a Remote Server**. The **Publish Report** dialog will open.



2. In the **Domain or Server URL** field, enter the path to your Reporting Services server (for example <http://MyReports/ReportServer>).
3. Click **Refresh**. OfficeWriter will display the folders available on the server.
4. Navigate to the destination folder for your report.
5. In the **Report Name** field (at the bottom of the **Publish Report** dialog), enter a name for your report.
6. Optional: Click **Data Source Credentials** to specify how the report will link to the data. You may also do this from the Reporting Services Report Manager after you publish your report. See the Reporting Services documentation for the meaning of the different data source credentials options.
7. Click **Ok**. If your report was already published on the server, you will be asked to overwrite it. When the report is published, you will receive a message box telling you that publishing was successful.



You are now ready to [view](#) your report.