

# Server-side OfficeWriter for SSRS

Jump to:

- [Automatic Installation](#)
- [Manual Installation](#)
- [Installing for SSRS 2012 with SharePoint](#)

## Automatic Installation

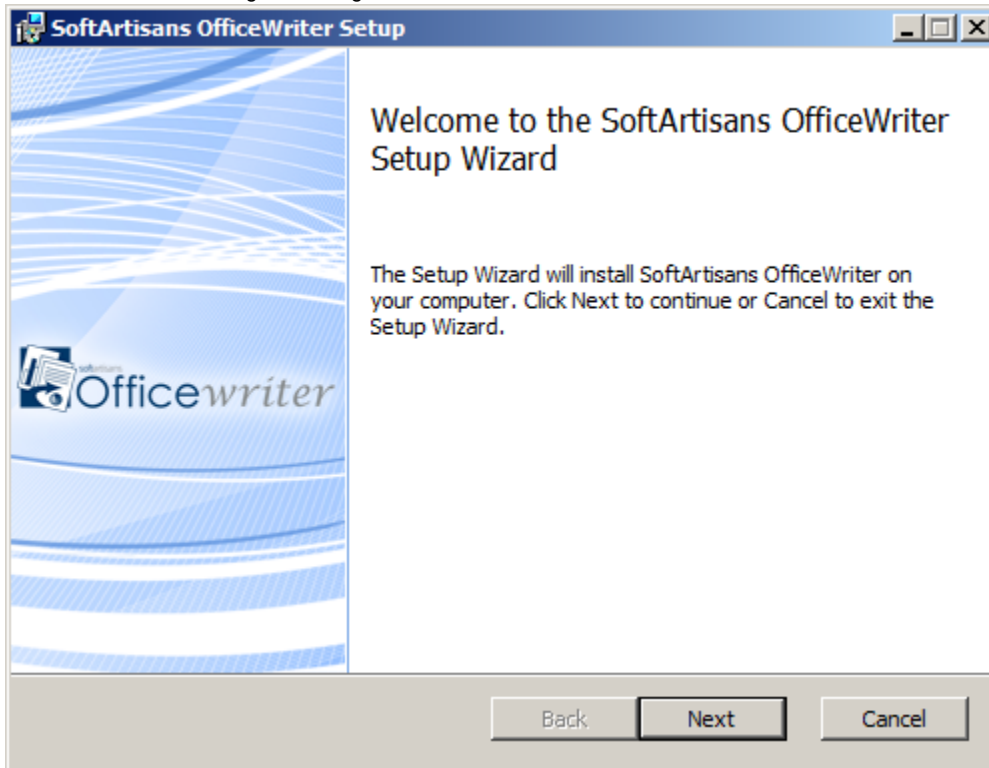
### Introduction

The OfficeWriter 10 installer is available in 64-bit (OfficeWriter-Installer-10.#.#-x64.msi) and 32-bit (OfficeWriter-Installer-10.#.#-x86.msi). The bitness refers to the bitness of the operating system, not the version of SQL Server Reporting Services.

There is a single OfficeWriter installer that handles installing any configuration of OfficeWriter, regardless of which edition (SE or EE) or components (ExcelWriter, PowerPointWriter, WordWriter, SSRS integration) you have purchased.

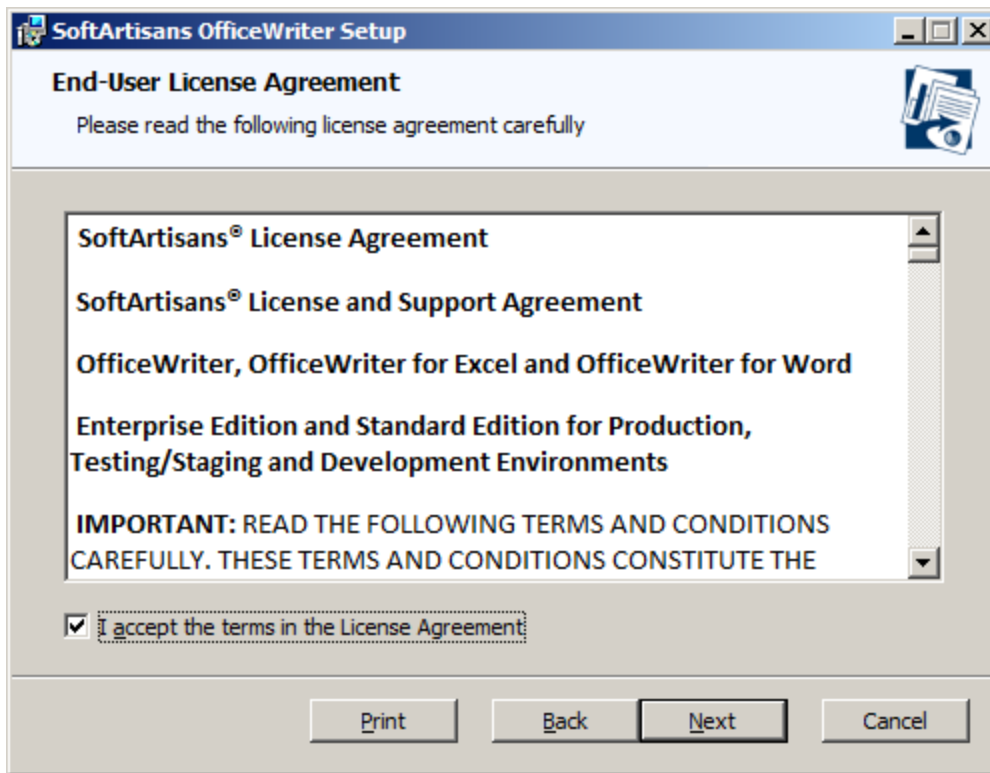
### Running the Installer

1. Check that your system meets the [System Requirements]. You **MUST** have SQL Server Reporting Services installed on the machine that you are trying to install OfficeWriter for SSRS. If SSRS is not detected, it will not be available as a custom setup option.
2. The OfficeWriter for SSRS integration requires modifying several SSRS config files and adding DLLs to the bin directory. To ensure a stable installation, **STOP** the SQL Server Reporting process before installing OfficeWriter.
3. Double click the msi to begin installing OfficeWriter for .NET:



If you have a previous version of OfficeWriter installed, you may be prompted to upgrade or remove the existing version of OfficeWriter. We recommend that you follow the steps to [remove the previous version of OfficeWriter](#) before continuing with your installation.

4. Click **Next** to proceed to the End-User License Agreement.
5. Read the End-User License Agreement and click **Next** when finished.



6. Click **Next** to proceed to the license key entry.
7. You will be prompted for a license key. Enter a license key into the box and click **Add Key**.

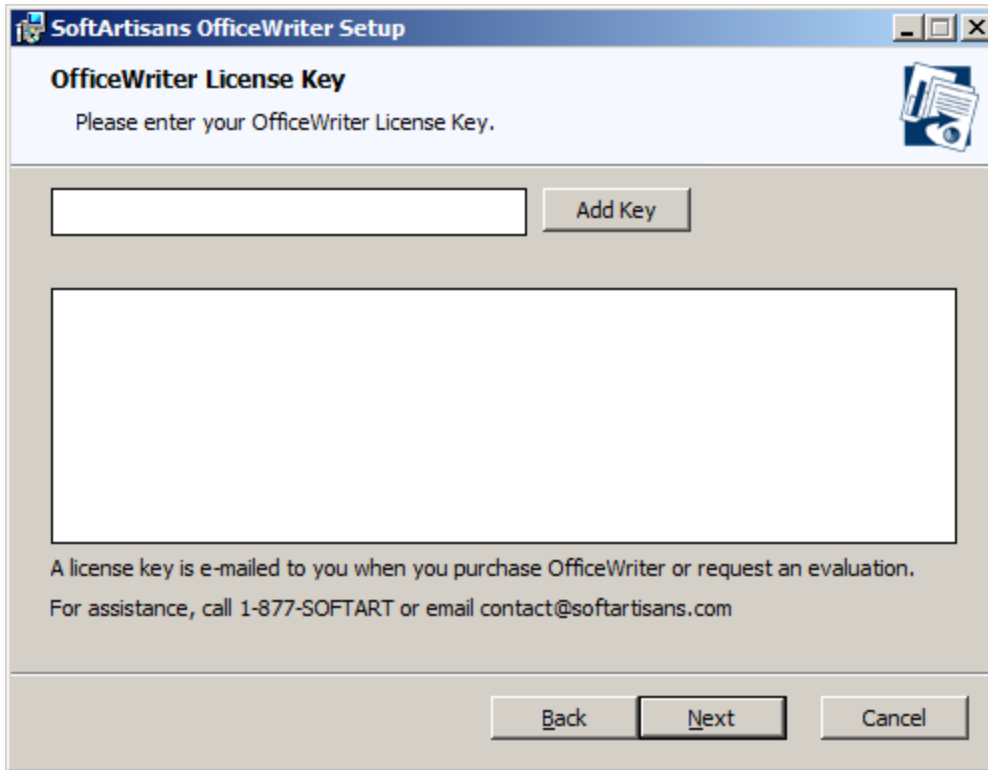


#### **Where to find your license key**

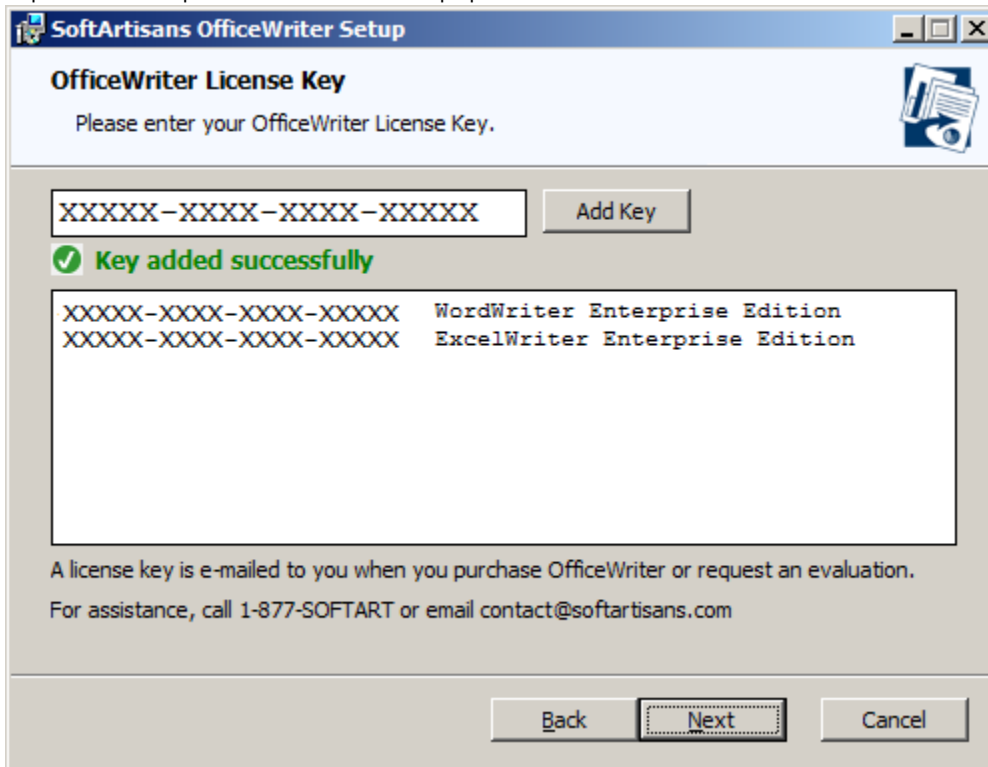
If you are evaluating, your 30-day OfficeWriter EE license key was sent in your evaluation e-mail.

If you have purchased the product, you can find your license keys:

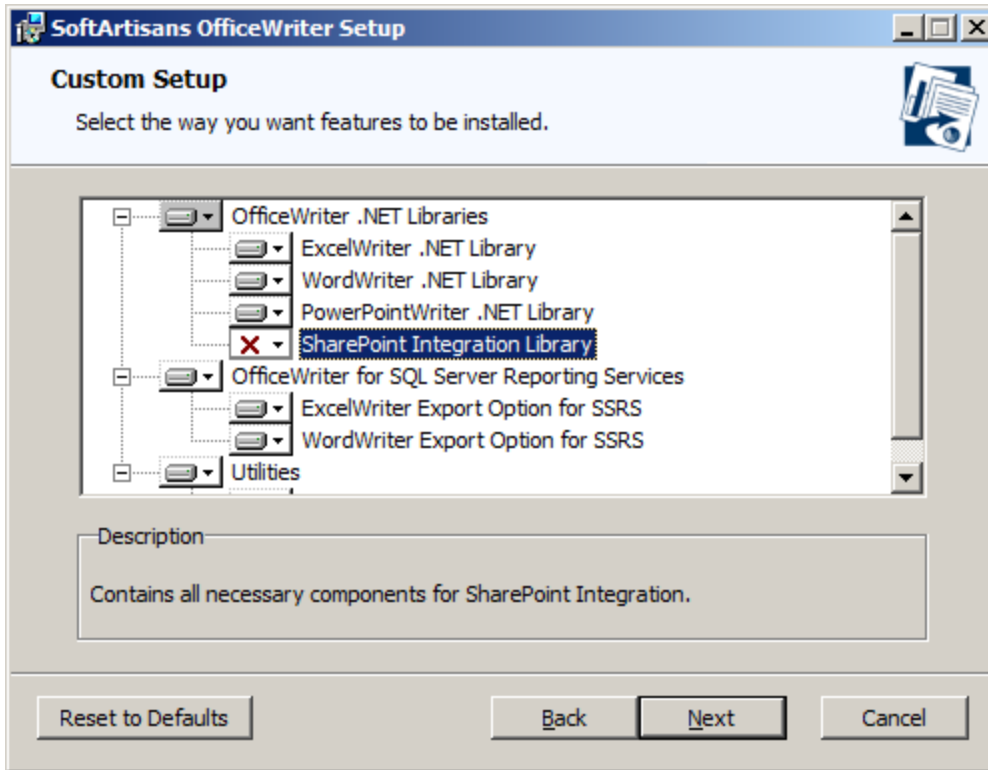
- In the original order confirmation e-mail
- On the [OfficeWriter site](#). You will need to log in with the credentials that were used to purchase the product. These credentials are also available in the original order confirmation e-mail.



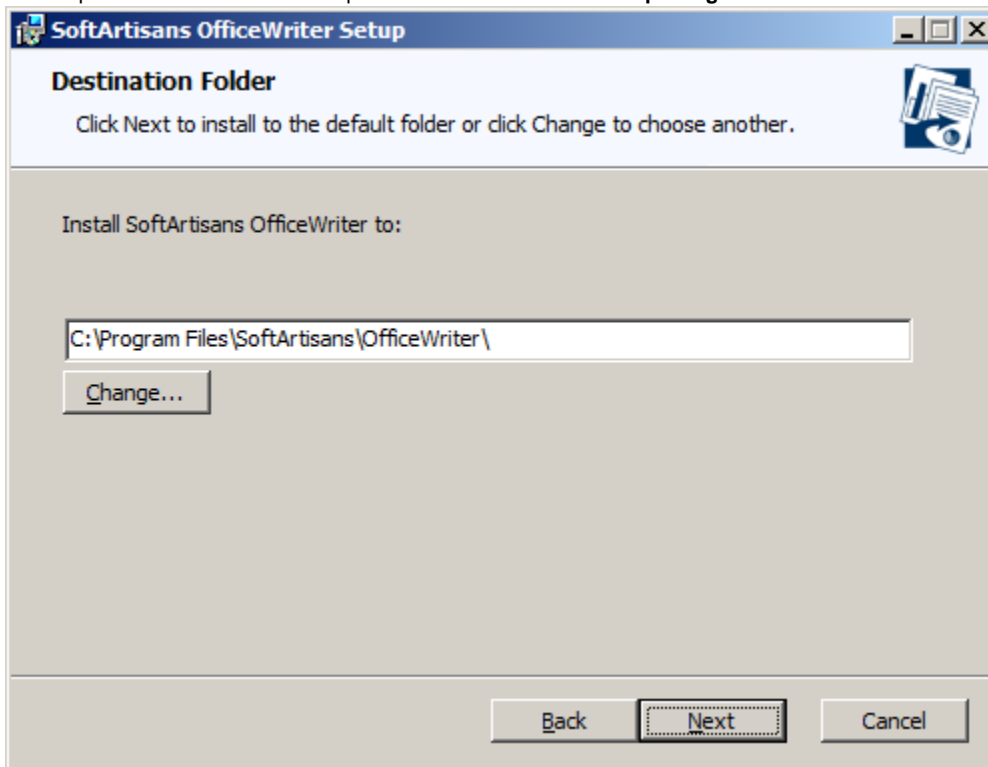
8. The installer will confirm what edition (Standard or Enterprise) and product the license key is. Multiple license keys can be entered at this step. Click **Next** to proceed to the custom setup options.



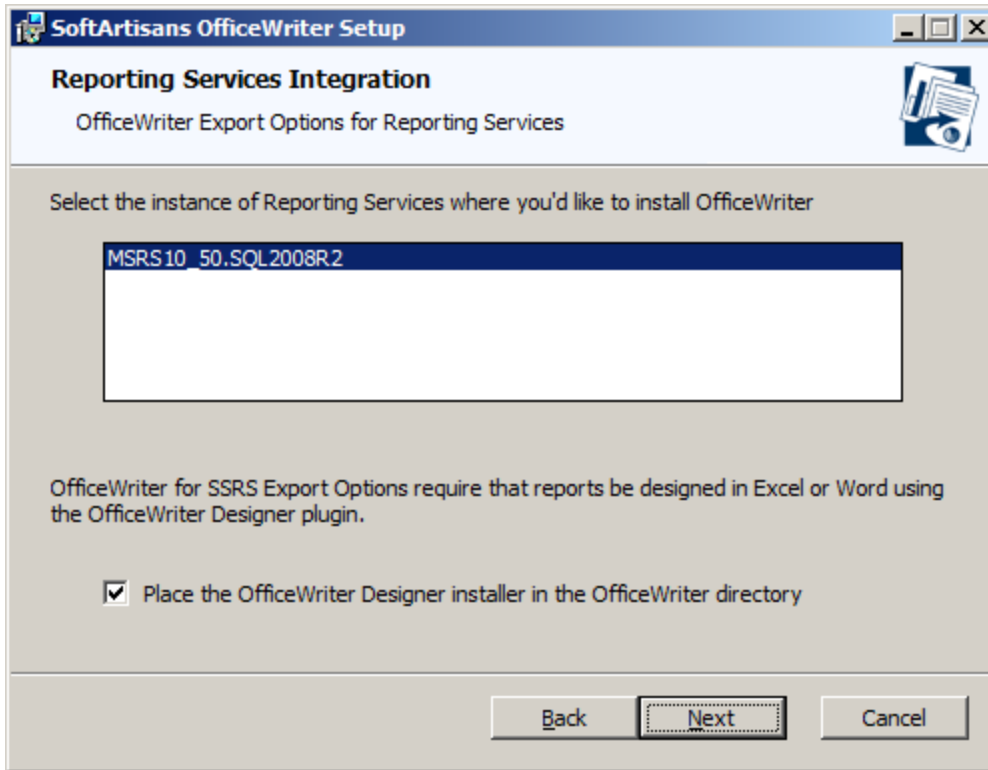
9. You will need to select the components to install. To include or exclude any components from your installation, click on the drop-down next to the component. Click \*Next\* when done.



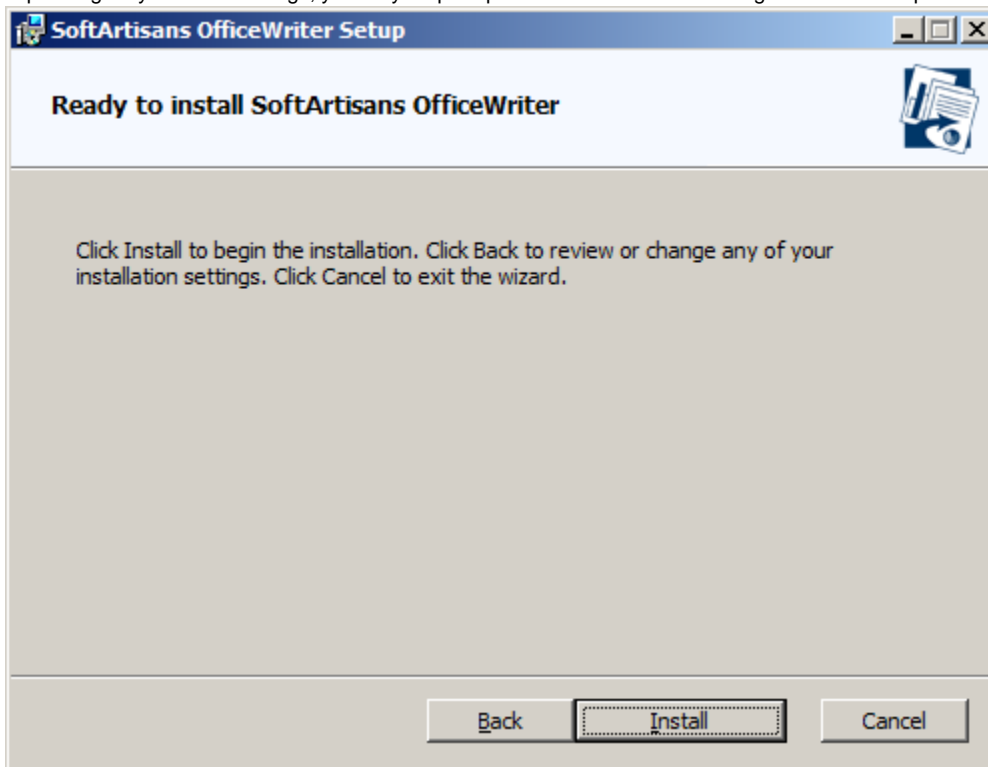
10. The destination folder is where the OfficeWriter assemblies and utilities will be unpacked. By default, the destination folder will be **C:\Program Files\SoftArtisans\OfficeWriter**. Click **Next** when done. SSRS-specific assemblies will be unpacked to a subfolder called **Reporting Services**.



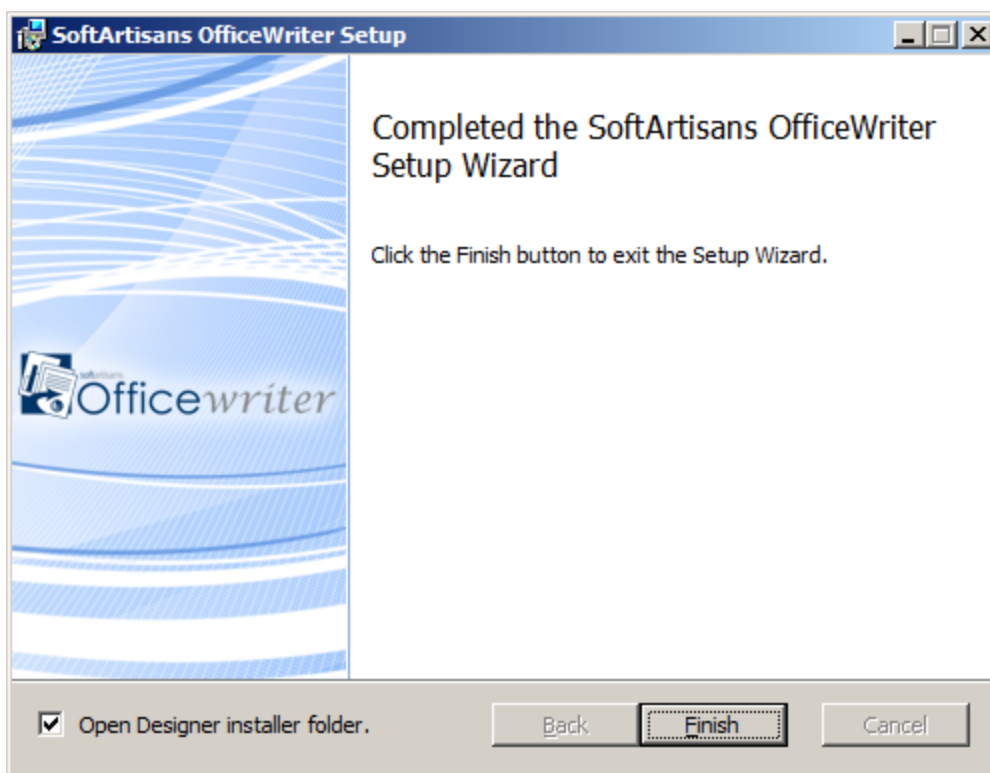
11. The installer will attempt to locate any instances of SQL Server Reporting Services on the machine. Select the installation to add OfficeWriter to.
12. You will also be given the option to unpack the original OfficeWriter Designer installer to the destination folder. This is recommended. Click **Install** when done.



13. The OfficeWriter installer requires administrative privileges to write the license key to the registry. On Windows Vista and above, depending on your UAC settings, you may be prompted for UAC elevation during the installation process.



14. Click **Finished** to exit the installer.



15. **START** the SQL Server Reporting Services process to complete the installation process.

## Manual Installation

### Installation Files

The following files are unpacked to the destination folder selected during the automatic installation process and are needed for the manual installation process.

#### Installation Files

Product	File	Description
ExcelWriter	SoftArtisans.OfficeWriter.ExcelWriter.dll	<ul style="list-style-type: none"> <li>.NET ExcelTemplate object</li> <li>.NET ExcelApplication object (EE only)</li> </ul>
PowerPointWriter	SoftArtisans.OfficeWriter.PowerPointWriter.dll	<ul style="list-style-type: none"> <li>.NET PowerPointTemplate object (EE only)</li> <li>.NET PowerPointApplication object (EE only)</li> </ul>
WordWriter	SoftAartisans.OfficeWriter.WordWriter.dll	<ul style="list-style-type: none"> <li>.NET WordTemplate object</li> <li>.NET WordApplication object (EE only)</li> </ul>
Reporting Services Integration	SoftArtisans.OfficeWriter.SSRS2008.dll or SoftArtisans.OfficeWriter.SSRS2005.dll	<ul style="list-style-type: none"> <li>SSRS integration assembly for SSRS 2016/2012/2008 (R2) or SSRS 2005</li> </ul>
License Manager	LicenseManager.exe	Manage, add, and remove license keys for OfficeWriter.

## Installing OfficeWriter for SSRS



There were some significant infrastructure changes made for SSRS 2012 in SharePoint integration mode that require a different manual installation process than from native mode. Please see [Installing for SSRS 2012 with SharePoint](#) for more details on installing for SSRS 2012 and later.

1. Run the OfficeWriter installer on another machine with SQL Server Reporting Services to unpack the necessary installation files (see above).
2. Make sure that your system meets the [System Requirements](#).
3. Installing OfficeWriter for SSRS requires modifying several SSRS config files and dropping DLLs in the bin directory. **STOP** SQL Server Reporting Services process before installing OfficeWriter.
4. Copy the following files to <MSSQL Directory>\Reporting Services\ReportServer\bin
  - a. **SoftArtisans.OfficeWriter.RS2005.dll** (for Reporting Services 2005) or **SoftArtisans.OfficeWriter.RS2008.dll** (for Reporting Services 2008, Reporting Services 2012, or Reporting Services 2016)
  - b. **SoftArtisans.OfficeWriter.WordWriter.dll**
  - c. **SoftArtisans.OfficeWriter.ExcelWriter.dll**
5. Run **LicenseManager.exe** to install the OfficeWriterEE or OfficeWriterSE key
6. Modify the **RSReportServer.config** file in <MSSQL Directory>\Reporting Services\ReportServer\*. Copy the following report rendering extension declaration to the file's <Render> node:  
For Reporting Services 2005:

```
<Configuration>
  <Extensions>
    <Render>
      <Extension Name="XLTemplate"
Type="SoftArtisans.OfficeWriter.ReportingServices.ExcelTemplateRenderer,
      SoftArtisans.OfficeWriter.RS2005" />
      <Extension Name="WordTemplate"
Type="SoftArtisans.OfficeWriter.ReportingServices.WordTemplateRenderer,
      SoftArtisans.OfficeWriter.RS2005" />
    </Render>
  </Extensions>
</Configuration>
```

For Reporting Services 2008 or later:

```
<Configuration>
  <Extensions>
    <Render>
      <Extension Name="XLTemplate"
Type="SoftArtisans.OfficeWriter.ReportingServices.ExcelTemplateRenderer,
      SoftArtisans.OfficeWriter.RS2008" />
      <Extension Name="WordTemplate"
Type="SoftArtisans.OfficeWriter.ReportingServices.WordTemplateRenderer,
      SoftArtisans.OfficeWriter.RS2008" />
    </Render>
  </Extensions>
</Configuration>
```



You will likely already have Extension elements in your Render node. You should only need to copy the Extension element lines below your existing Extension elements in the Render node.

7. Modify the **rssrvpolicy.config** file in <MSSQL Directory>\Reporting Services\ReportServer. Add the following security trust codegroup to the file's <CodeGroup> node:

```

<configuration>
  <mscorlib>
    <security>
      <policy>
        <PolicyLevel version="1">
          <CodeGroup class="FirstMatchCodeGroup" version="1"
PermissionSetName="Nothing">
            <CodeGroup class="UnionCodeGroup"
              version="*"
              PermissionSetName="FullTrust"
              Name="SoftArtisans_OfficeWriter_Strong_Name"
              Description="This code group grants SoftArtisans OfficeWriter code
full trust.">
              <IMembershipCondition
                class="StrongNameMembershipCondition"
                version="*"

PublicKeyBlob="0024000004800000094000000060200000024000052534131000400000100010047
79CB207F11

5E86EF9DD3233F9F130F8891911345176650F72330F84CA3F54C96DEB08439680660F02872EEF5DA3
955

A14C63F96E57DFB71B1535280C37DA2CB5BA37D78A9882414DB11F67FD66DEBC4AD93DD34F4A587D3
4D

B4D23D9C6AF83431D88A7EF42BB01082913F3560DCB50129C5BBA7ECA0DE8BC286DA74F58FADE" />
            </CodeGroup>
          </CodeGroup>
        </PolicyLevel>
      </policy>
    </security>
  </mscorlib>
</configuration>

```



You will likely already have the "FirstMatchCodeGroup" CodeGroup element in your Render node. You should only need to copy the innermost CodeGroup element (Name="SoftArtisans\_OfficeWriter\_Strong\_Name").



The PublicKeyBlob value should be in one line. When you copy the lines above to \*rssrvpolicy.config\*, remove the line breaks within the PublicKeyBlob.

8. To install the samples, upload the RDL files in **OfficeWriter\ReportingServices\Samples** to the Reporting Server using Report Manager.