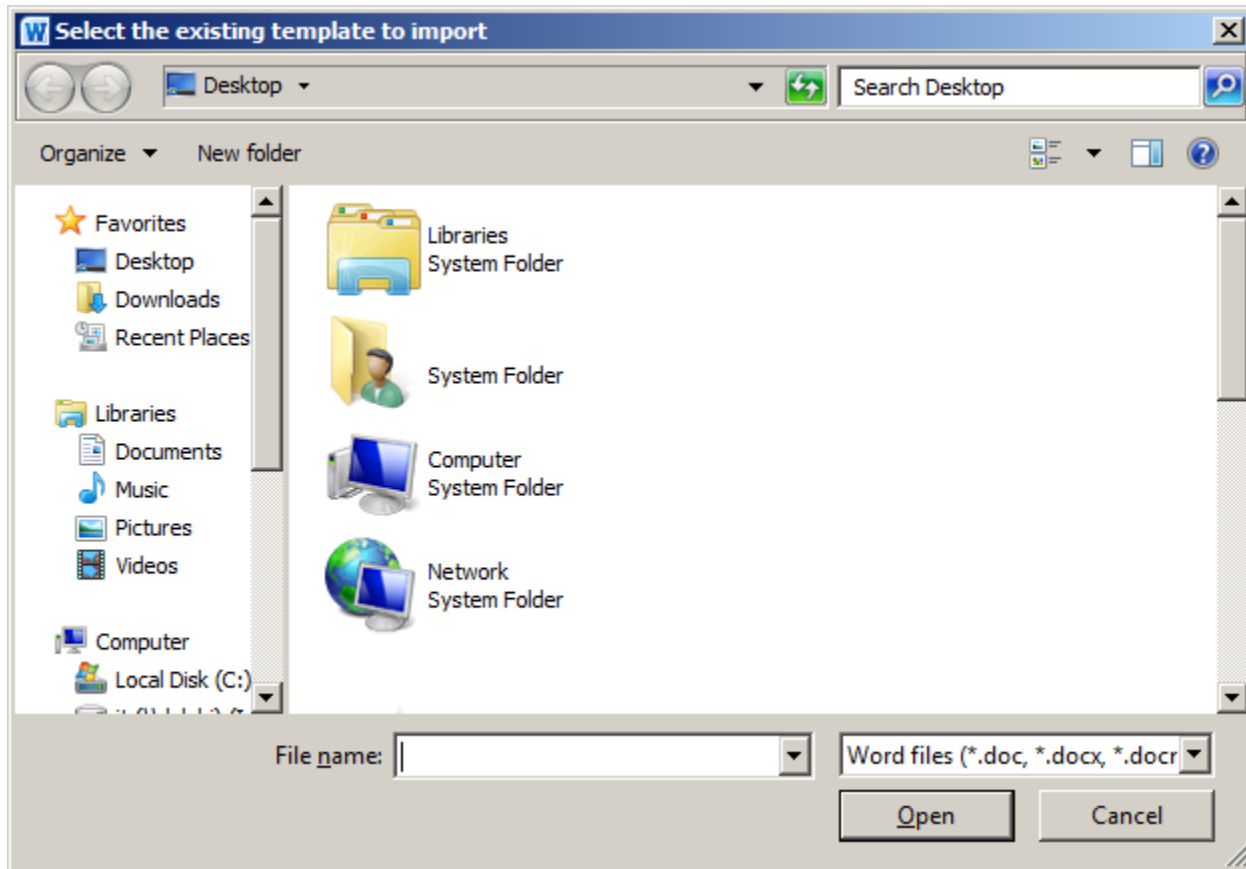


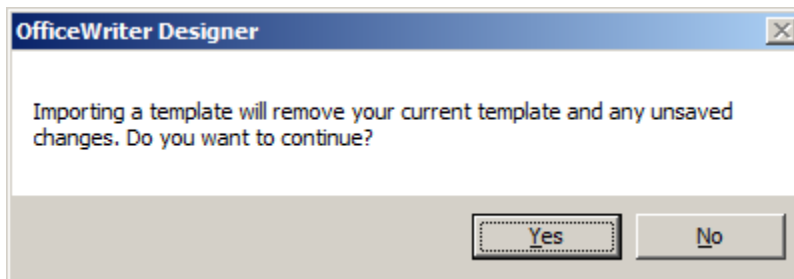
Designer .NET Word - Import Template

The **Import Template** dialog opens when you click the *Import Template* button on the *OfficeWriter Designer .NET* application tab. It allows you to replace the existing template associated with the RDL file with an DOC, DOCX, or DOCM file that was previously created.



To import a new template:

1. Click **Import Template** on the OfficeWriter Designer .NET toolbar.
2. Browse to the folder that contains the file that will replace the template in the RDL.
3. Select the DOC, DOCX, or DOCM file and click **Open**.
4. You will be given the option to cancel or continue with *Import Template*. Click *yes* to continue. Click *no* to cancel.



Importing a new template will completely replace the existing template. If you wish to retain part of the template file that is attached to the RDL: save a copy as a Word file, copy the desired worksheets into the template to import, and then import the updated template. *Wo*rdImportDialog.png