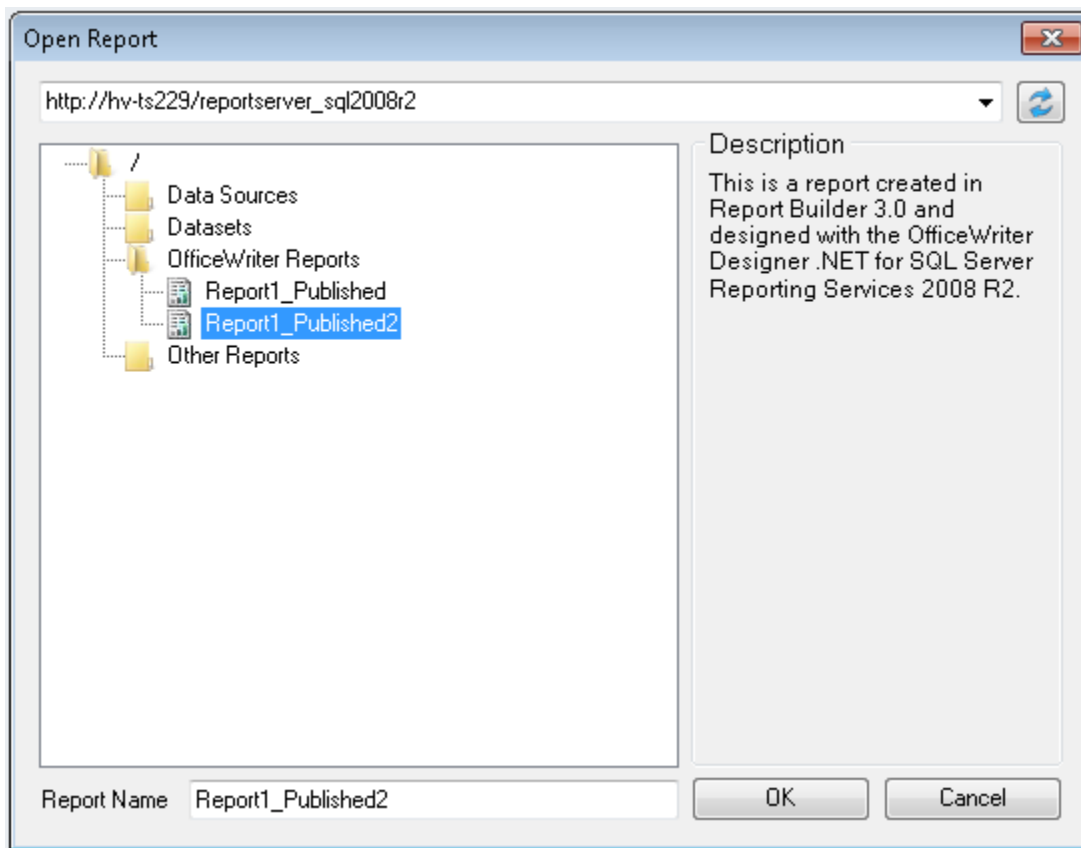


Designer .NET Excel - Open Report

Open Report dialog opens when you select *OfficeWriter Designer .NET > Open > Open from Server*. It allows you to open RDL files that have already been created and saved to a remote SQL Server Reporting Services (SSRS) report server. RDLs for SQL Server Reporting Services 2008 and higher can be opened.



To open an RDL from a remote report server:

1. Click **Open** from the OfficeWriter Designer .NET toolbar.
2. Select **Open from server**.
3. In the **domain or server URL** field, enter the path to your SSRS report server. For example, <http://MyReportServer/ReportServer>. Click **R**
efresh or hit *Enter* to connect to the report server.



If you have already connected to your report server, the address should be available in the drop-down menu. The address bar will automatically populate with the report server that was last connected to.

4. Navigate to the RDL file on the report server.
5. Double click the file or select the file and click **OK** to download the report.



The Designer .NET does not support having multiple reports open at the same time.

File Support in OfficeWriter Designer .NET



Certain older RDL files are not supported by the OfficeWriter Designer .NET. Attempting to open unsupported files will result in a warning message and the file will not be opened by OfficeWriter.

Currently supported files

RDLs that are used in SSRS 2008 or later (2008 R2, 2012) are supported. This includes:

- RDLs created in Visual Studio 2005 that have been re-saved/upgraded in Visual Studio 2008
- RDLs created in Visual Studio 2008, 2010, or 2012
- RDLs created in Report Builder 3.0

Currently unsupported files

- RDLs created in Visual 2005 or earlier
- RDLs created in Report Builder 2.0 or earlier
- RDLs created in OfficeWriter Designer MS Query integration